

beyond today

YOUR ELECTRONIC COMMUNITY NEWSLETTER **AUTUMN 2012**



beyond housing boom

With dramatic increases in electricity charges and predictions that costs will continue to rise, we've seen a rise in the number of housing starts planned at Beyond Today as more people opt to invest in energy efficient living.

There is a growing confidence in investing in eco-sensitive design and here at our South Coast development there is evidence of that with another eight homes approved for construction in 2012. We also have ten families working their way through their design options in preparation for building later in the year.

In addition to these new construction starts, many housing approvals were granted in 2011 and we expect to see 20 to 30 homes under construction this year, indicating a growing interest in living with the water and energy savings that can be achieved through our environmentally sustainable building guidelines.

The Beyond Today guidelines include solar energy and hot water supply, rainwater harvesting, improved glazing performance and zero overshadowing from neighbours to ensure winter sun and summer breezes are never blocked.

More information can be found at www.beyondtoday.com.au



affording a peaceful retirement

Finding a location that delivers on how you want to live in your retirement years can be challenging and we have just begun construction on a world class energy efficient retirement village that seems to be hitting the mark.

There has been an overwhelming response to our ground breaking Chiton Retirement Village and its environmentally sustainable design which can take some of the worry out of the retirement years.

Beyond Today and Key Invest are joint developers of this unique project which will incorporate 86 homes and a stunning Community Centre that will offer dining facilities, a library and a fitness room built to the highest standards.

The retirement homes are being built to a 7-star energy rating and will give people the opportunity to live their retirement years with little or no ongoing expenses for energy and water.

There are ten homes in the first stage of development and already seven of those have

been reserved by people who are looking for an energy efficient retirement to alleviate some of their concerns.

Some of the features of the Chiton retirement homes will be:

- Solar energy and solar hot water supply
- Double glazed windows
- Rainwater harvesting via 10,000 litre underground tanks
- Orientation to winter sun with optimal placement of windows for light, winter warmth and summer breezes

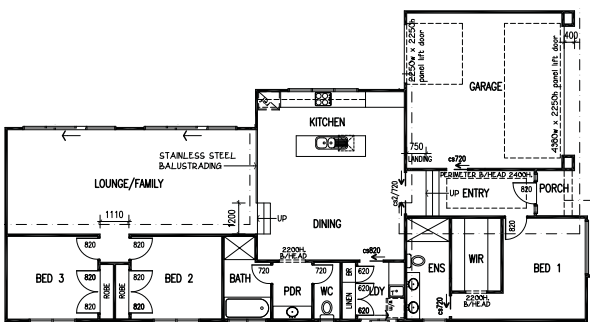
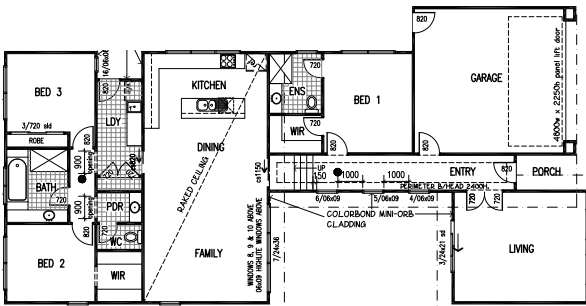
In the coming months, visitors to the Beyond Today site at Hayborough will see the first ten retirement homes take shape and raise the bar in energy efficient retirement living.

To find out more about this peaceful and affordable retirement living opportunity visit www.beyondtoday.com.au





new standard in house and land packages



The local builders working with us at Beyond Today are setting a very high bar in energy efficient construction for the rest of the country to follow and the house and land packages we are offering in partnership with these builders are highly rated.

We are proud to be working with Victor Harbor based South Coast Constructions which was awarded two national awards for excellence from the Master Builders Association in 2011.

House and land packages with South Coast Constructions have been available from \$390,000 and the offer which creates homes built to 7-star efficiency will continue in 2012.

Now we are introducing two new packages from Talladira Homes - another local builder that is making great advances in energy efficient construction with their outstanding work at Beyond Today.

Prices range from \$390,000-\$440,000 and the finished houses will sit lightly on the landscape and take advantage of the views to our wetlands, reserves and open spaces.

In our building and design guidelines, every block of land has an outlook onto one of the green spaces we have created on our now flourishing 90 hectares of previously denuded farmland.

More information can be found at www.beyondtoday.com.au



iving without air-conditioning



“We particularly enjoyed the design process which allowed us to explore the best ways to reduce what has been a lifelong reliance on electricity from the grid.”

Alistair Paul, Beyond resident.

One of the benefits of living a sustainable lifestyle at Beyond Today is being able to reduce the cost of running your home and this summer many of our residents were able to measure their savings by keeping their air conditioners off.

Some residents at Beyond Today haven't even installed an air conditioning unit such is their confidence in our energy efficient guidelines and design - others have found they don't have to flick the switch very often at all.

That's been a pleasant surprise for Alistair and Kristyn Paul who weren't thinking about energy efficiency until they came across Beyond Today in their search for an ideal lifestyle.

“The building guidelines here mean you live with a very impressive 7-star energy rating and as we looked further into this it just made sense,” Alistair said.

“The way every detail is taken care of at Beyond Today has been very impressive and the house has come together beautifully.

“We particularly enjoyed the design process which allowed us to explore the best ways to reduce what has been a lifelong reliance on electricity from the grid.”

Mike and Katherine Annells are moving into their home in May and they too are looking forward to a different way of life which includes living without air conditioning.

“It has been exciting to work with Beyond Today and the builders they recommend because we're all aiming to create the best house in terms of energy efficiency, clever orientation and smart looking design,” Mike said.

“The guidelines are a good discipline in every way and we are confident our house will have great style and minimum impact on the environment.”



f

ood for thought in the beyond today garden

As the days get cooler our thoughts have turned to getting out in the garden and this autumn it will be a community effort.

We have almost 70 hectares of green space at Beyond Today surrounding just over 20 hectares of housing blocks and roads, so there is always something to do around the reserves and wetlands we have created.

In April we are planting out two of our reserves with edible produce such as stone fruits, citrus and pistachio nuts as part of our commitment to finding a balance between housing and the environment. In addition a number of raised veggie beds will be built which are provided for the use of the residents and create the platform for the beginning of a 'Beyond' community garden.

Our Landscape Designer Margit Wright says as we aim for a sustainable future it is important to encourage close interaction with our natural surroundings.

“On a larger scale around the world this socio-ecological approach is becoming critical as we face food shortages and the loss of available land due to excessive development and over farming,” Margit said.

“We believe all change starts at home and when we purchased the Beyond Today site it was itself denuded farmland which we have nurtured back into life by planting more than 250,000 trees and shrubs in our wetland and reserves.

“Now it’s fruit and nuts and berries putting new life and sustainability into our reserves.”



image gallery

beyond today ELECTRONIC NEWSLETTER SUMMER 2011/12





image gallery

beyond today ELECTRONIC NEWSLETTER SUMMER 2011/12



image gallery

beyond today ELECTRONIC NEWSLETTER SUMMER 2011/12



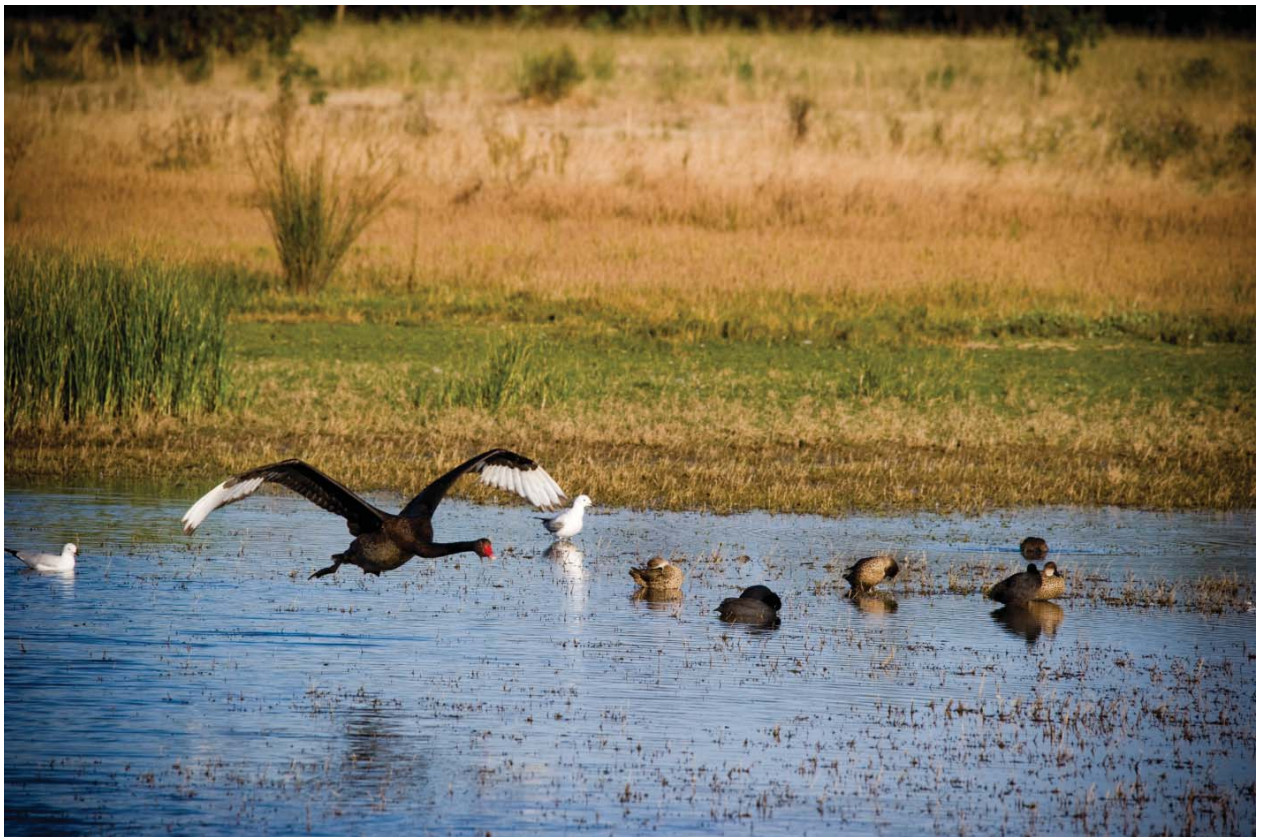
image gallery

beyond today ELECTRONIC NEWSLETTER SUMMER 2011/12



image gallery

beyond today ELECTRONIC NEWSLETTER SUMMER 2011/12



●
|
mage gallery

beyond today ELECTRONIC NEWSLETTER SUMMER 2011/12