


beyond today

YOUR ELECTRONIC COMMUNITY NEWSLETTER **SUMMER 2011/12**



isplay centre xmas opening hours

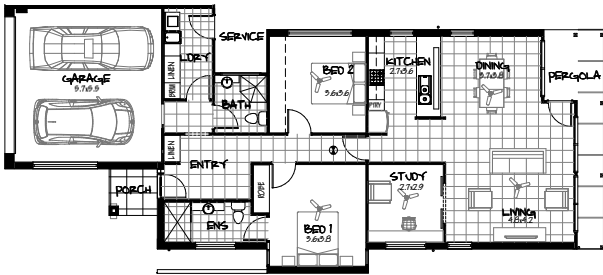
Whilst our display centre will be closed on Christmas Day, Boxing Day and New Year's Day it will be open from 12pm until 5pm on all other days – so we'd love to see you at our Sales and Information Centre so we can share more about the development.

A perfect excuse for a day trip to the Fleurieu Peninsula and an easy one-hour drive from Adelaide, our display centre showcases our multi-award winning development and demonstrates the many design principles and products that can improve the performance of your home.

Our Sales and Information Centre is located at the head of the development off Ocean Rd, Hayborough and more information can be found at www.beyondtoday.com.au

house and land packages

impression 13



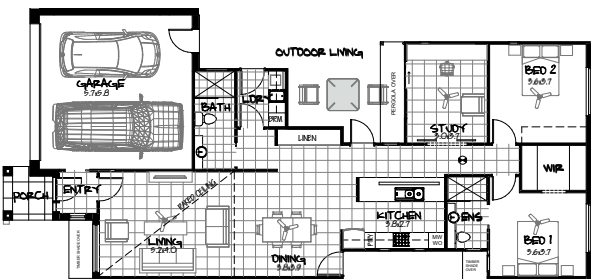
The stars are aligning for home buyers wanting to buy their piece of the Australian dream at Beyond Today, with house and land packages starting from \$390,000 and offering many designs with 7-star energy ratings or better.

With the extremes of weather that come with living in Australia, it makes sense to design and build a minimum 7 star-rated home that takes into account solar passive principles to make the best use of winter sun, minimise the impact of summer heat and incorporate good natural air flow.

Beyond Today has set guidelines for the energy efficient construction of these homes, which are being built by multi-award winning builders South Coast Construction, Talladira Homes and Bailey Homes.

Features include solar energy, solar hot water and 10,000 litres of rainwater plumbed throughout the home. Double-glazed windows, high levels of insulation, solar panels and ceiling fans are also included in the contemporary design.

impression 10



Each house and land package comes with a free detailed landscaping plan valued at \$3000 and all properties look onto parks or reserves.

More information can be found at www.beyondtoday.com.au



S

ummer living

There's no doubt that interest in sustainable housing is on the rise and having our Beyond Today development so close to Victor Harbor is attracting the attention of metropolitan buyers who are no longer just looking at where they will live but how they will live.

In designing Beyond Today it was important for us to create Australia's most eco-sensitive development on 90 hectares of regenerated farming land, and positioned just 200 metres from the beach at Hayborough it is the perfect location to live.

The 250,000 native plants and trees planted over the past six years are maturing into a thriving wetland, attracting bird life and other native animals to the area.

It is the perfect time of the year to take advantage of nearly 4 kilometres of walking trails and bikeway for a journey around the wetland through native vegetation and safely onto the beach at Chiton Rocks.

Our aim was to build a development that everyone can enjoy and that's why there is 75 per cent open space and wetlands. We have residents here who have made the move from interstate, overseas as well as other listed areas of SA and tell us how they want to live their lives.

More information can be found at www.beyondtoday.com.au



flock of birds

It's always nice to spend time in the great outdoors, but now eagle-eyed residents at Beyond Today can watch nature in action from the convenience of their doorstep.

We often have renowned bird watcher Winston Syson spending time around our wetlands and in mid-November he spotted an amazing 45 different species of birds – a remarkable outcome for one site in one day.

These outstanding results are even better when you consider that our wetlands are less than three years old but already the area has become home to Baillon's Crake, Australian Spotted Crake, Little Grassbird, Glossy Ibis and the Collared Sparrowhawk.

With numerous species breeding on site the total bird species count is now up to 75, and Win was particularly excited to also spot the Sharp Tailed Sandpiper and the Black Winged Stilt.

If you are a keen bird-watcher, why not pack a picnic lunch and make a day trip of it and see how many bird species you can spot!



Investment opportunity

With so much uncertainty still being experienced across investment markets, we've found a growing number of people that feel they can do a better job of managing their retirement savings and have shown great confidence in the future of environmentally sustainable property.

We've had a number of recent sales to individuals and couples wanting to have greater choice over their investment options and remain in control of their retirement savings.

Beyond Today resident Ian Charlton is spreading his investments across shares, term deposits and land because he believes diversification in his investment portfolio is a smarter option and reduces risks.

"I have chosen to make my land investments in the environmentally sustainable arena with a house and blocks of land at Beyond Today, and I can't see any better investment in the market," Mr Charlton said.

"People buying into Beyond Today will benefit from the legacy the Wright family is creating - they have developed the land with 75 per cent green space and wetlands and their building guidelines are the best that are available."

Mr Charlton believes not enough developers are making a commitment to the environment, and with many indicators showing it's the direction the community is headed, demand is likely to outstrip supply within five years.



"There is more and more interest in sustainable living options and I believe that demand will increase dramatically in the next five years, meaning that right now is the best time to act."

Ian Charlton, Beyond resident.

a ward winning 2011

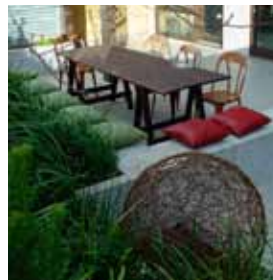
It's been a big year for the Beyond Today development, which is increasingly being recognised for the outstanding work that is being done to create and protect the natural landscape environment.

Earlier this year the innovative development received the top four accolades at the Landscape Association of South Australia Awards.

Beyond Today took out the **Landscape Residential Design for a garden over \$100,000, Most Environmentally Sensitive Project, ABC Gardening Award of Excellence** and the **over-all Judges Choice Award**.

The Beyond Today sales and information centre was recognised by judges for the following key points:

- Materials selected based on their environmental credence such as recycled materials;
- A dry creek and pond was designed to catch stormwater runoff allowing water to seep into subsurface and keep greenery watered for longer, requiring no irrigation once established;
- The driveway falls are designed to direct flow to the garden beds during small rainfall events and the lawn area is very small and drought tolerant;
- Concrete retaining walls are made of cement with low embodied energy as the concrete and aggregate were sourced locally;
- Native and indigenous plants are grown and the plant selection includes exotics with low water demands;
- The garden watered from three rain water tanks to establish new plants;
- LED garden lighting throughout.





●
|
mage gallery

beyond today ELECTRONIC NEWSLETTER SUMMER 2011/12



●
|
mage gallery

beyond today ELECTRONIC NEWSLETTER SUMMER 2011/12





●
|
mage gallery

beyond today ELECTRONIC NEWSLETTER SUMMER 2011/12



●
|
mage gallery

beyond today ELECTRONIC NEWSLETTER SUMMER 2011/12



●
|
mage gallery

beyond today ELECTRONIC NEWSLETTER SUMMER 2011/12





●
|
mage gallery

beyond today ELECTRONIC NEWSLETTER SUMMER 2011/12